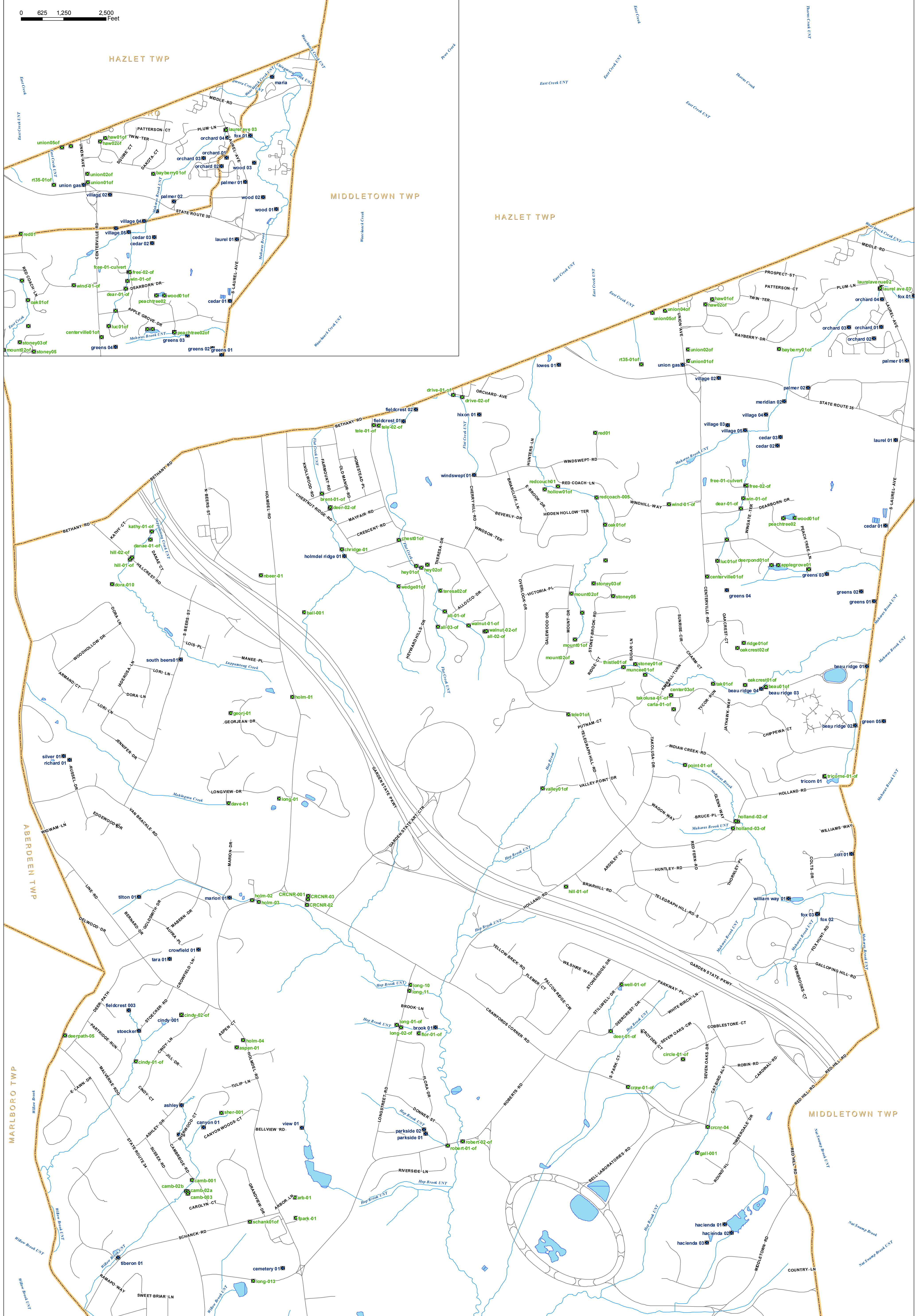


0 625 1,250 2,500 Feet



**T&M ASSOCIATES**  
 11 Tindall Road  
 Middletown, NJ 07748-2792  
 Phone: 732-671-6400  
 Fax: 732-671-7365

- Stormwater Outfalls (2008)
- Stormwater Outfalls (2007)
- Roads
- Open Water
- Stream
- Municipal Boundary

0 450 900 1,800 Feet

### Township Outfalls: Northern Section Holmdel Township Monmouth County, New Jersey

Prepared by: STK, July 30, 2008  
 Source: NJDEP - Municipal Boundary, Streams, Open Water;  
 Monmouth County GIS - 2005 Roads; T&M Outfalls (various dates)  
 File Path: H:\HOLM05711\GIS\Projects\holm5711\_AIOutfallsNoAerial\NORTH.mxd

NOTE: This map was developed using New Jersey Department of Environmental Protection Geographic Information System digital data, but this secondary product has not been verified by NJDEP and is not State-authorized.